

The
ALBERTA FOUNDATION FOR THE ARTS
**TRAVELLING
EXHIBITION
PROGRAM**

REGION 4 SOUTHEAST / 2018-2019 EXHIBITIONS



The ALBERTA FOUNDATION FOR THE ARTS
TRAVELLING EXHIBITION PROGRAM
REGION 4 SOUTHEAST / 2018-2019 EXHIBITIONS

WELCOME

For the 2018-2019 year, TREX Southeast offers eleven new exhibitions and three returning, representing the work of over 59 Alberta artists. Exhibition themes are varied to suit every audience, with historic and contemporary artwork in a wide range of media. Each exhibition comes with an interpretive catalogue and educators guide providing exhibition information and lesson plans. Plus, the guides are available in a pdf format under the Exhibition Catalogues link, making exhibition information and lesson plans accessible for Smartboards and easily printable. Exhibitions are designed for ease of handling and may be displayed in different ways depending the type and amount of space available. We also offer programming support for our venues such as our visiting artist workshops, artist talks and exhibition receptions.

Bookings are made on a first-come, first-served basis and we recommend that you submit your requests early. TREX exhibition fees remain affordable at \$75.00 for each four-week loan period. The TREX Program pays all shipping and insurance costs. To make your request, simply fill out the request form and submit it by fax or email. You are welcome to phone us any time for assistance with bookings at (403) 502-8586.

We welcome southern Alberta venues of all kinds, including schools, libraries, hospitals and visitor centres to participate in our program and we look forward to serving your community.

ACKNOWLEDGMENTS

Thank you for your contributions:

Artists

Program Venues

Venue Representatives

Volunteers

OUR PROGRAM PARTNERS:

Art Gallery of Grande Prairie, Grand Prairie

Art Gallery of Alberta, Edmonton

Alberta Society of Artists, Calgary

The Alberta Foundation for the Arts

AFA Art Collections Staff



The ALBERTA FOUNDATION FOR THE ARTS
TRAVELLING EXHIBITION PROGRAM
REGION 4 SOUTHEAST / 2018-2019 EXHIBITIONS

MANDATE

Since the program's introduction during Alberta's 75th Anniversary Celebrations in 1980, the Alberta Foundation for the Arts (AFA) has supported a provincial Travelling Exhibition (Trex) program. The Trex program strives to ensure every Albertan is provided with an opportunity to enjoy fully developed exhibitions in schools, libraries, health care centres, and smaller rural institutions and galleries throughout the province.

The Trex program assists in making both the AFA's extensive art collection and the work of contemporary Alberta artists available to Albertans.

Four regional organizations now coordinate the program for the Foundation.

These partners offer a wide range of exhibitions to communities from High Level in the north, to Milk River in the south, and virtually everywhere in between. Annually, more than 300,000 visitors enjoy nearly 100 exhibitions in over 107 communities.

The program offers educational support material enabling educators to integrate visual arts exhibitions into the school curriculum.

The program may offer artist visits with selected exhibitions at a nominal cost to the exhibition venue.

FOUR REGIONAL *Organizations*

Esplanade
Arts & Heritage
Centre
Southeast
Alberta

Art Gallery
of Alberta
Northeast and
North Central
Alberta

The Art
Gallery of
Grand Prairie
Northwest
Alberta

Alberta
Society
of Artists
Southwest
Alberta



The ALBERTA FOUNDATION FOR THE ARTS
TRAVELLING EXHIBITION PROGRAM
REGION 4 SOUTHEAST / 2018-2019 EXHIBITIONS

A STEP-BY-STEP GUIDE TO HOSTING TREX EXHIBITIONS

1 *Selection*

- Choose which exhibition(s) you would like your venue to host for the 2018-2019 year by reviewing the exhibition launch catalogue.
- Fill out an exhibition request form with preferred and alternate exhibition periods. A workable PDF and Word exhibition request form is located under our Current Exhibitions link.
- Send form by email to xanisb@medicinehat.ca
- Selections will be confirmed or alternatives suggested
- A booking confirmation document will be emailed within 48 hours of receiving your exhibition request

2 *Pre-Exhibition*

In September 2018 you will receive a package with of an exhibition loan agreement form (per exhibition). Please have your venue's signing authority sign all exhibition loan agreements and mail documents back to the Esplanade within 30 days (envelope provided).

About three weeks before the show's arrival, the venue will receive:

- The Exhibition Interpretive Catalogue and Educator's Guide (copy to keep), invoice, condition report form, publicity report form, visitor comment sheet and media release
- Please send exhibition media release to local media a week before exhibition begins

3 *Interactivity*

- An Exhibition Interpretive Catalogue and Educator's Guide is provided to connect the audience with the artists featured in the exhibition
- Visual Art activities for the classroom are offered to engage and inspire students
- Artists may be available to visit the venue in person to conduct a visiting artist workshop. To find out more about arranging a special event such as an artist talk, public reception or workshop, please contact Xanthe Isbister, Program Manager/Curator

4 *Receiving*

- Crate(s) will arrive by transport truck at least two days before the start of the period
- Important! Please wait 24hrs before opening crates to allow contents to gradually meet venue's temperature and humidity levels

5 *Un-packing*

- Unpack artwork carefully from crates, noting any special handling instructions
- Use condition report form to list incoming artwork
- Inspect artwork/frames for signs of damage
- Set-up display of artwork and didactic panels
- Avoid sunlight/heat/water sources
- Attach labels to wall or table surfaces near artwork (no tape or gum on Plexiglas)
- Clean surfaces with soft, clean cloth

6 *Packing*

- Carefully remove artwork from walls, shelves or tables
- Complete outgoing condition report form
- Place artwork in designated slots/containers inside crates
- Seal crates

7 *Shipping*

- Shipping labels, information and instructions are emailed to the venue one week prior to shipping
- Third-party billed to the City of Medicine Hat, Esplanade Arts & Heritage Centre

8 *Post-Exhibition*

- Fill out publicity and attendance form
- Email completed forms, along with visitor comments to the program manager/curator. \$75.00 exhibition fee is due 30 days after exhibition, and payable by cheque to the City of Medicine Hat, Esplanade Arts & Heritage Centre

The ALBERTA FOUNDATION FOR THE ARTS
TRAVELLING EXHIBITION PROGRAM
REGION 4 SOUTHEAST / 2018-2019 EXHIBITIONS

EXHIBIT SCHEDULE

Availability as of May 15 12:30pm:

Period 4

Altered Realities

Period 8

On the Grid

Period 9

On the Grid

Period 10

Altered Realities

On the Grid

1.6 Million Miles a Day

59 ARTISTS REPRESENTED

*Exhibition available all year, Periods 1-10.

Period Dates

PERIOD 1

August 29 - September 26, 2018

PERIOD 2

October 3 - October 31, 2018

PERIOD 3

November 7 - December 5, 2018

PERIOD 4

December 12, 2018- January 16, 2019 (5 weeks)

PERIOD 5

January 23 - February 20, 2019

PERIOD 6

February 27 - April 3, 2019 (5 weeks)

PERIOD 7

April 10 - May 8, 2019

PERIOD 8

May 15 - June 12, 2019

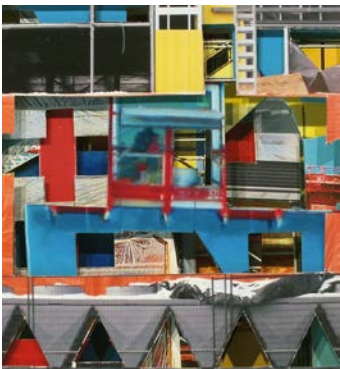
PERIOD 9

June 19 - July 17, 2019

PERIOD 10

July 24 - August 21, 2019





ALTERED REALITIES

AVAILABLE IN PERIODS 1-10

In this exhibition, both David Foxcroft and Kristine Zingeler use the process of layering to create complex photographic collages. Each artist has a unique approach to their practice; Foxcroft uses ten layers of personal photographs to create consuming, intangible environments, whereas Zingeler uses images of photographs from vintage books layered with three dimensional found objects to create abstract surreal worlds. The sixteen works in this exhibition describe both the familiar and unreal, and together assemble altered realities.

Curated by Xanthe Isbister,
Esplanade Arts and Heritage Centre

VISITING ARTIST WORKSHOP
OPPORTUNITIES AVAILABLE WITH THIS
EXHIBIT.

- 2 ARTISTS
- 17 ARTWORKS
- 2 DIDACTICS
- 75 RUNNING FEET
- 2 CRATES

LEFT TO RIGHT / TOP TO BOTTOM

Kristine Zingeler, *A Prehistoric Autumn*, archival digital pigment print of collage, 2016; Kristine Zingeler, *The Invisible World*, archival digital pigment print of collage, 2016; Dave Foxcroft, *Inside Job*, photo collage, 2016; Dave Foxcroft, *Full Moon Framed*, photo collage, 2012 (images courtesy of the artists).



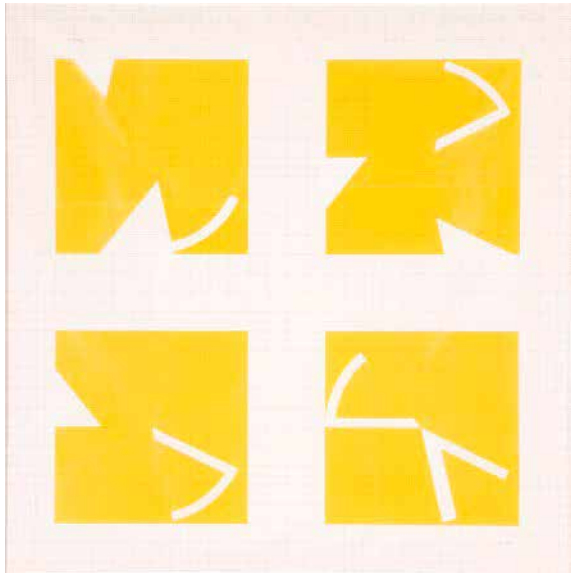
The ALBERTA FOUNDATION FOR THE ARTS
TRAVELLING EXHIBITION PROGRAM
 REGION 4 SOUTHEAST / 2018-2019 EXHIBITIONS



ON THE GRID

AVAILABLE IN PERIODS 6-10

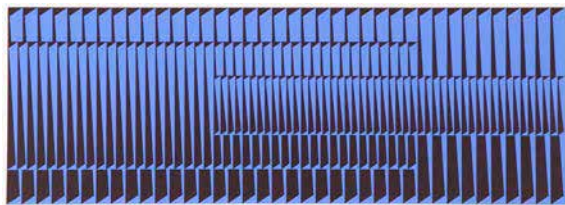
In the visual arts, the grid is most often associated with mid-20th century Minimalism, Op Art and Color Field painting. Artists associated with these movements were interested in the flatness of the picture plane, which led the American art critic Clement Greenberg to proclaim in 1954 that “pictorial space [in painting] has lost its ‘inside’ and become all ‘outside.’” He declared that painting was headed in a progressive trajectory toward greater abstraction, flatness and purity of form—a direction embraced by a number of leading artists throughout the United States, Europe and Canada. These artists were not concerned with painting for the purpose of representing the natural world. They wanted to create art for art’s sake. Art that alludes to itself. Art that was about pure form. Art devoid of an explicit narrative. The grid became the perfect emblem for this pursuit.



Like its presence in our day-to-day lives, the grid manifests literally and covertly in the artwork selected for this exhibition. In some instances, it is a visible, blatant motif, and in other instances, its presence is implied through the measured, and sometimes, modular construction of the compositions. This collection of work is intended to remind us of the grid’s tremendous influence on 20th-century art and architectural discourse, but also to lead us to contemplate its enduring presence. *On the Grid* is comprised of 17 works of art from the collection of the Alberta Foundation for the Arts by 7 artists: Helen Archer, Charles Boyce, Ihor Dmytruk, Christian Grandjean, Harry Kiyooka, Bill McCarroll and Frank Stella.

Curated by Shannon Bingeman
Developed by the Alberta Society of Artists

7 ARTISTS
17 ARTWORKS
70 RUNNING FEET
2 CRATES



TOP TO BOTTOM

Ihor Dmytruk, *Print #6*, 1972, silkscreen on paper; Charles Boyce, *Permutations of a Seven Sided Circle*, 1984, pencil, plastic on paper; Christian Grandjean, *Calgary #1*, 2008, inkjet photograph on paper, all images from the Collection of the Alberta Foundation for the Arts.



The ALBERTA FOUNDATION FOR THE ARTS
TRAVELLING EXHIBITION PROGRAM
REGION 4 SOUTHEAST / 2018-2019 EXHIBITIONS

1.6 MILLION MILES A DAY

AVAILABLE IN PERIODS 6-10



The exhibition *1.6 Million Miles a Day* features videos and photographs by Canmore artist Dan Hudson. The works in this exhibition provide an unassuming first impression. The viewer initially encounters imagery of a sunset, park, cityscape, or mountain range. But this initial impression will dissolve as you become absorbed in the dark meditative waves in the video *Illusions of the Sun Going Down* or the ghostly mountains that appear and disappear in *News, Weather & Sports*, a year-long time-lapse video that documents season changes and leisure activities in a public park. As the seconds turn into minutes, the conceptual and technical complexities of Hudson's work begin to emerge.

The concept of time is essential in both Hudson's creative and technical processes. Earth's average orbital speed is 110,000 km/h, and it travels approximately 1.6 million miles around the sun each day. It rotates on a tilted axis, from west to east, which is why the sun appears to rise on the eastern horizon and set on the western. Time is based on Earth's rotation, and as Hudson describes, "Time delineates the essence as well as the parameters of our existence." The works in *1.6 Million Miles a Day* address both linear and cyclical aspects of time, provoking the viewer to contemplate observation and memory, and how we relate to each other and the world around us. Hudson's technical feats directly relate to the conceptual bases of his work; meticulous documentation and editing processes take months, at times years.

Curated by Xanthe Isbister,
Esplanade Arts and Heritage Centre

1 ARTIST
3 ARTWORKS:
1 LENTICULAR TRIPTYCH
1 DIPTYCH VIDEO (2 TV's - may hang or stand on tabletop) 1
VIDEO (1 TV - may hang or stand on tabletop)
2 DIDACTICS
APPROX. 45 RUNNING FEET
2 CRATES

TOP TO BOTTOM

Dan Hudson, *Illusion of the Sun Going Down*, 2 channel video, 2015;
Dan Hudson, *News, Weather, Sports*, looping HD video, 2010; Dan
Hudson, *Sun, Earth, Moon, NYC*, animated lenticular photograph,
2016 (images courtesy of the artist).



ESPLANADE
Arts & Heritage Centre



The ALBERTA FOUNDATION FOR THE ARTS
TRAVELLING EXHIBITION PROGRAM
REGION 4 SOUTHEAST / 2018-2019 EXHIBITIONS

The ALBERTA FOUNDATION FOR THE ARTS
TRAVELLING EXHIBITION PROGRAM
REGION 4 SOUTHEAST / 2018-2019 EXHIBITIONS

CONTACT

Xanthe Isbister, Program Manager/Curator
Alberta Foundation for the Arts
Travelling Exhibition Program,
Region 4

Esplanade Arts and Heritage Centre
401 First St. SE
Medicine Hat, AB
T1A 8W2

xanisb@medicinehat.ca
p. 403-502-8586
f. 403-502-8589
www.trexprogramsoutheast.ca

